

# R 5 / R 5 V.V. / R 7 / R 7 V.V.





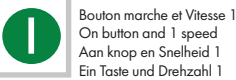
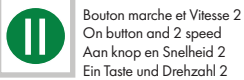



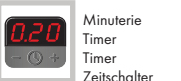
Consignes de sécurité et d' utilisation / Safety and Operating Instructions  
 Veiligheidsvoorschriften en gebruiksaanwijzing / Sicherheits- und Bedienungshinweise

**À FIXER AU MUR.  
 HANG ON THE WALL.  
 AAN DE WAND TE BEVESTIGEN.  
 AN DER WAND ZU BEFESTIGEN.**

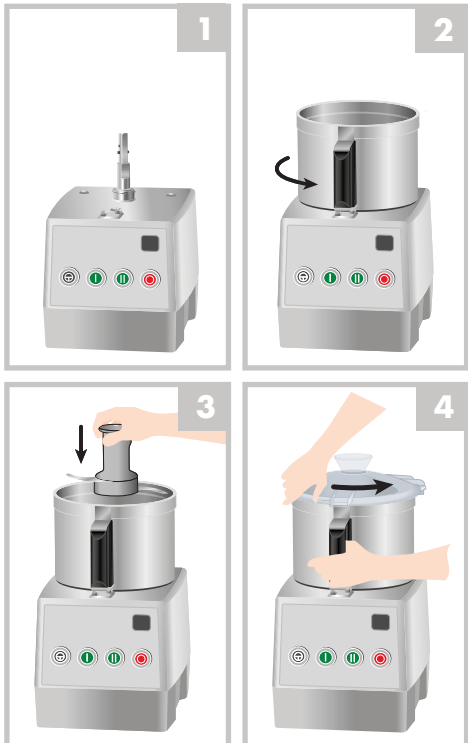


**robot coupe®**  
 www.robot-coupe.com

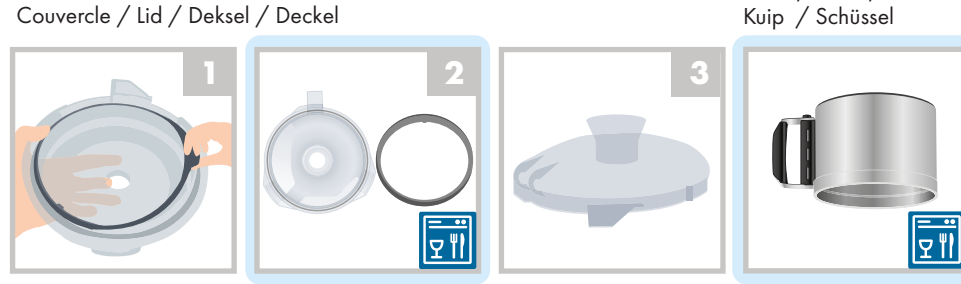
## Tableau de commande / Control Panel / Bedieningspaneel / Bedienfeld

		
<b>1 V</b>	<b>2 V</b>	<b>V.V.</b>
 Bouton Pulse Pulse button Pulse Momentschalter	 Bouton marche et Vitesse 1 On button and 1 speed Aan knop en Snelheid 1 Ein Taste und Drehzahl 1	 Bouton marche et Vitesse 2 On button and 2 speed Aan knop en Snelheid 2 Ein Taste und Drehzahl 2
		
R-Mix = Rotation Inverse Reverse Rotation Tegengestelde Draairichting Umgekehrte Drehrichtung	Bouton Arrêt Power Off Button UIT Ausschalttaste	
		
Variateur de vitesses Speed variator Toerenregelaar Drehzahlregler	Minuterie Timer Timer Zeitschalter	

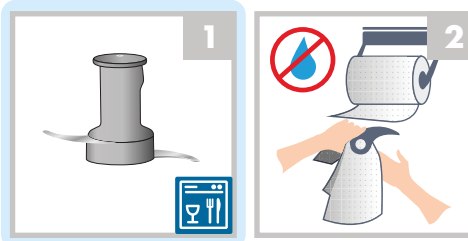
## Mise en marche et utilisation / Switching on and using the mixer / Inwerkingstelling en gebruik / Inbetriebnahme und Bedienung



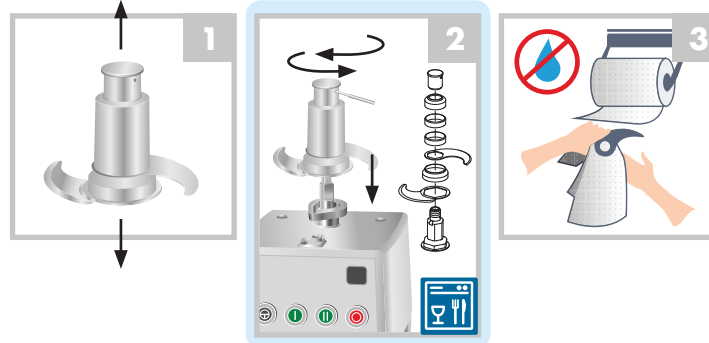
## Nettoyage et entretien / Cleaning and maintenance / Reiniging en onderhoud / Reinigung und Wartung



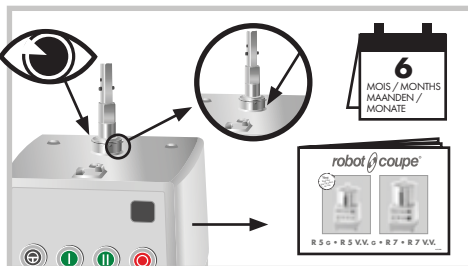
## R 5 / R 5 V.V. Couteau / Blade / Mes / Messer



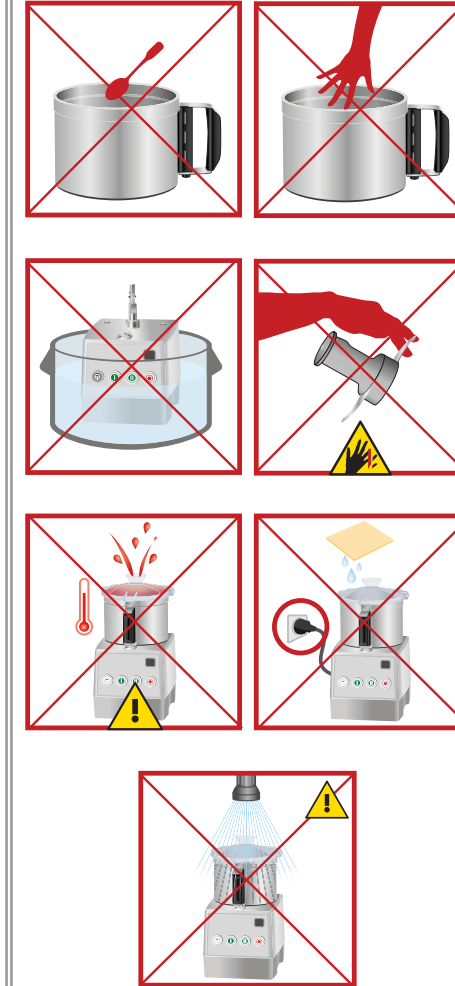
## R 7 / R 7 V.V.



## Bague d'étanchéité / O-ring (seal) / Afdichtingsring / Dichtungsring



## Sécurité / Safety Veiligheid / Sicherheit



**Ne jamais essayer de supprimer les systèmes de verrouillage et de sécurité. / Never try to remove the locking and safety systems. / Probeer nooit de vergrendelings- en beveiligingssysteem buiten werking te stellen. / Niemals versuchen, die Verriegelungs- oder Sicherheitsvorrichtungen zu umgehen.**

# R 5 / R 5 V.V. / R 7 / R 7 V.V.

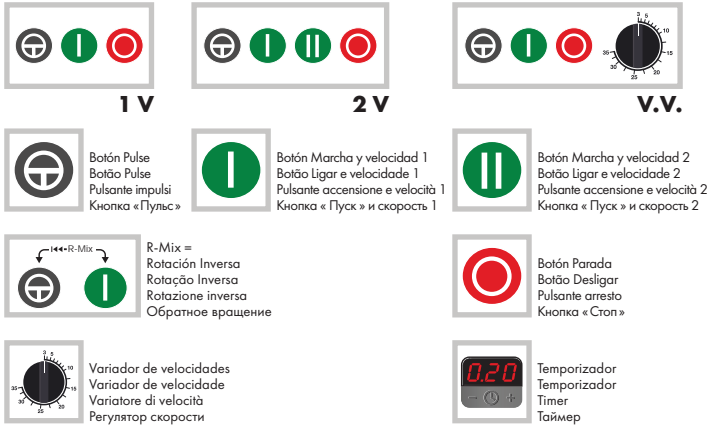
Consignas de seguridad y empleo / Instruções de segurança e de utilização  
Istruzioni di sicurezza e di utilizzo / Рекомендации по технике безопасности и использованию

**DEBE FIJARSE A LA PARED.  
PARA FIXAR NA PAREDE.  
DA FISSARE A PARETE.  
ПОВЕСИТЬ НА СТЕНУ.**

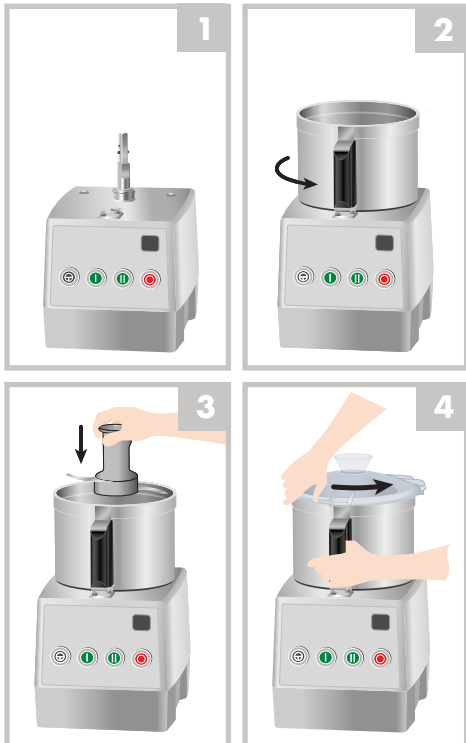


**robot coupe®**  
www.robot-coupe.com

## Panel de mandos / Painei de controlo / Quadro comandi / Панель управления

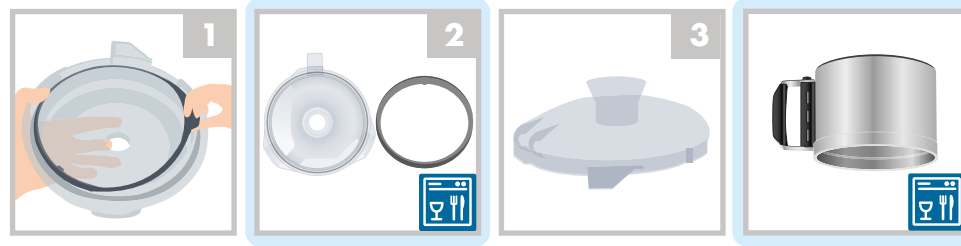


## Puesta en marcha y utilización / Ligaçao e utilização / Accensione e utilizzo / Включение и использование



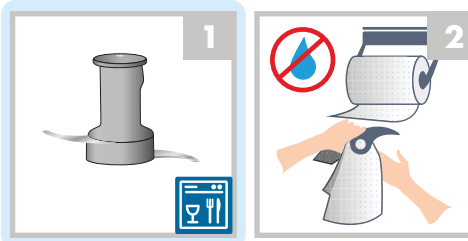
## Limpeza y mantenimiento / Limpeza e manutenção / Pulizia e manutenzione / Чистка и уход

Tapa / Tapa / Coperchio / Крышка

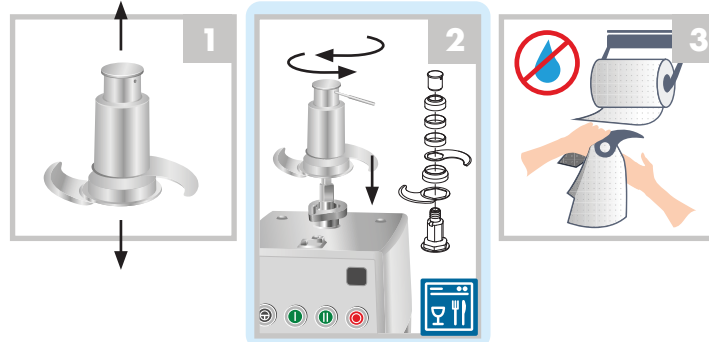


Cuba / Cuba / Vasca / Чаша

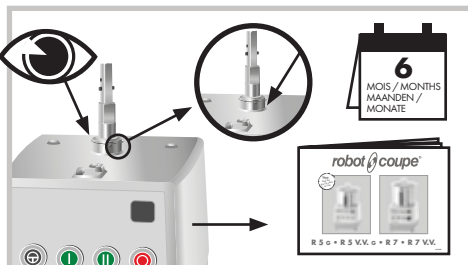
## R 5 / R 5 V.V. Cuchilla / Lâmina / Coltello / Нож



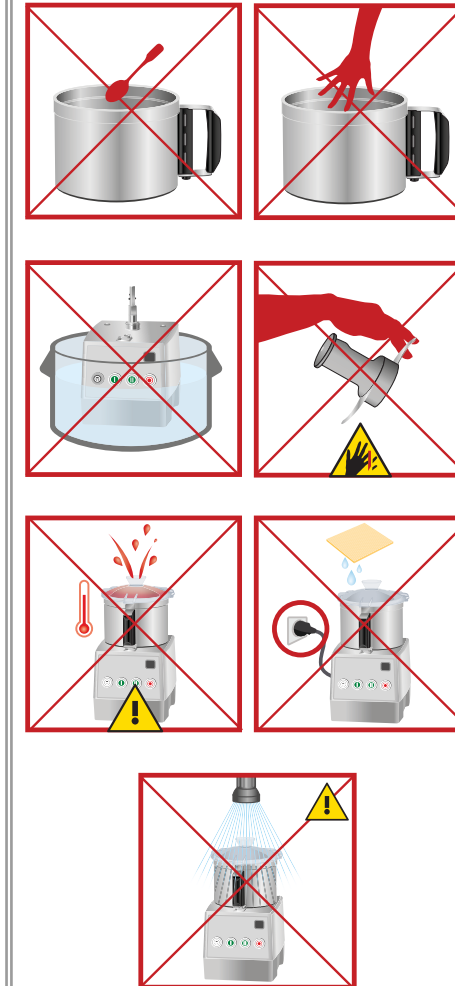
## R 7 / R 7 V.V.



Anillo de hermeticidad / Anel de vedação / Anello di tenuta / Уплотнительное кольцо



## Seguridad / Segurança / Sicurezza / Безопасность



**Nunca tratar de suprimir los sistemas de bloqueo y de seguridad. / Nunca tentar suprimir os sistemas de bloqueio e de segurança. / Non cercare in alcun caso di eliminare i sistemi di blocco e di sicurezza. / Никогда не отключать системы блокировки и защиты.**