

INSTRUCTIONS FOR OPERATION AND CARE OF Models SM402N

INSTALLATION:

If cord and plug is not used with this machine electrical connections should be made by qualified workmen who will observe all applicable Safety Codes and the National Electrical Code.

Before making electrical connections, CHECK THE SPECIFICATIONS ON THE NAME PLATE TO MAKE SURE THEY AGREE WITH THOSE OF YOUR ELECTRICAL SERVICE.

A cord and plug is furnished as standard equipment on this mixer (except for three phase current). The electrical outlet is tapped for 1/2" conduit should a permanent installation be desired.

Multiphase motors should be so connected that the planetary will revolve in the direction of the arrow in the illustration.

Set the shifter handle at the desired speed and turn on the switch to start the motor.

LUBRICATION:

The motor has grease packed ball bearings so will require little attention. The transmission gearing is packed with special grease that will last for several years. The small oiler is for lubricating attachments. Oil only when an attachment is in place and never use more than a drop or two. Lubricate the bowl slideways occasionally by applying a small amount of oil or grease with the tip of the finger. Only mineral oils are suitable for this type of lubrication.

The polished drip cup is a safe-guard to prevent any lubricant that might work out of the planetary gearing from dropping into the bowl. Remove the drip cup (by pulling straight down) once a month and wipe it clean.

SPEED CONTROL:

To change speeds, first turn off the motor, then move the shifter handle to the desired speed. In the illustration the shifter handle is set at number 3 or high speed.

Use number 3 speed for fast, light work as whipping cream, beating eggs and mixing thin batters.

Number 1 or slow speed is for heavy mixtures, like breakfast rolls, etc. Also use this speed for the food chopper attachment. In many mixing operations it is customary to start on Number 1 and then change to a higher speed as the work progresses.

BOWL LIFT:

Pull the lift handle forward to lower the bowl. It is necessary to lower the bowl to change agitators, this also makes the bowl more accessible for filling. When raising the bowl, move the lift handle a little beyond the vertical center until you feel it touch the stop. To mash potatoes, or to cream butter, start with the bowl down and raise it slowly into working position, while the agitator is rotating.

AGITATORS:

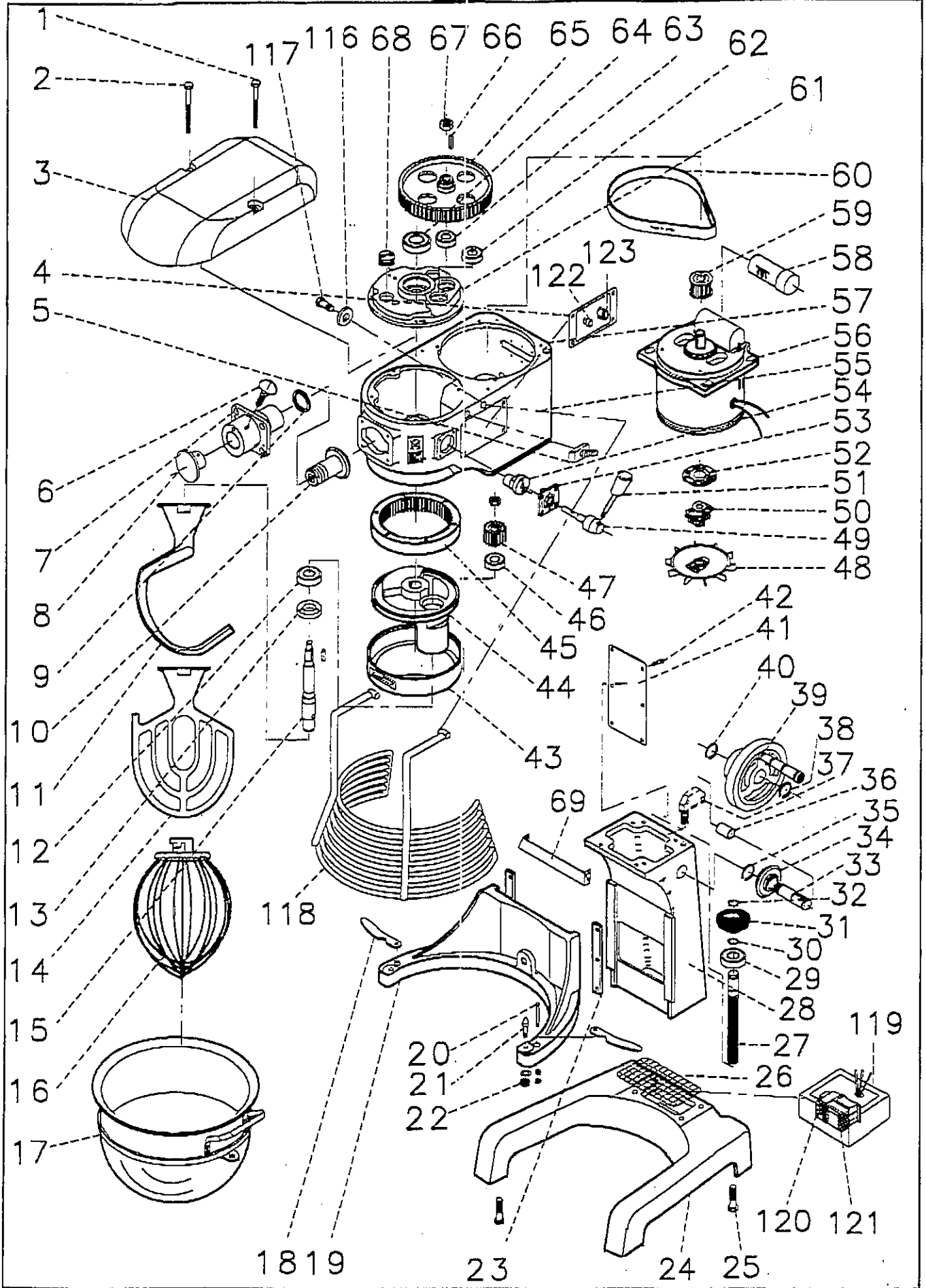
When assembling an agitator the bowl must be in the down position. Slip the agitator up on the shaft and turn it until the driving pin in the shaft reaches the L-shaped slot in the agitator shank. Agitators of various styles are available, each suited to a particular job.

The style "B" beater is commonly used for thin batters, cakes, and mashing potatoes. The style "D" whip is best for whipping cream and beating eggs. Two other styles frequently used are the "E" dough arm for heavy bread doughs.

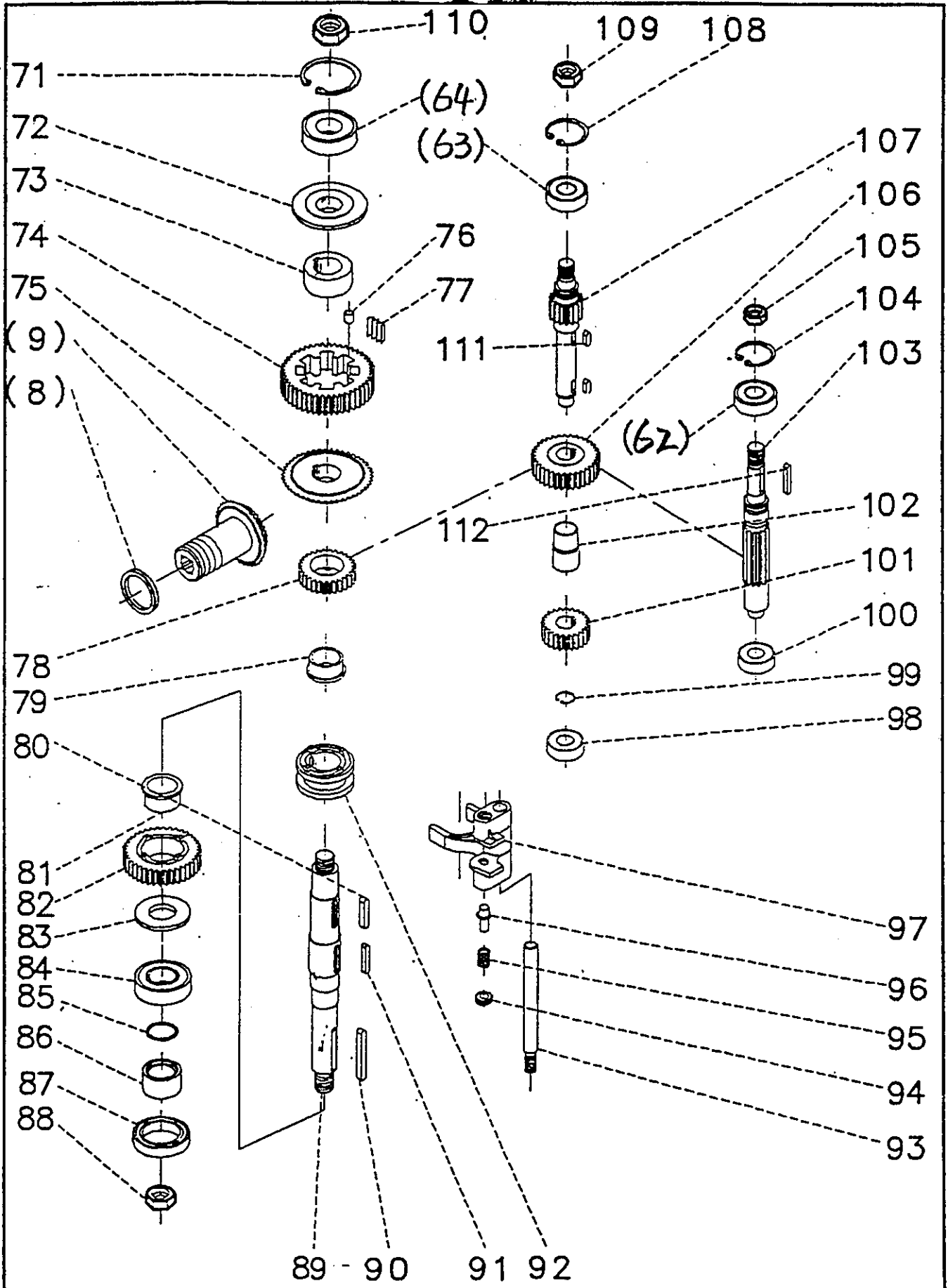
ATTACHMENTS:

Various attachments and accessories are available for this machine, such as; Vegetable Slicer & Food Chopper. The attachment socket is for the size 2 attachments. Before putting an attachment into the socket, stop the motor, then insert with a slight twist toward the left so that the stop stud in the attachment is tight against the side of the hole that receives it. When in place tighten the thumb screw and put a drop of oil in the oiler

The attachment drive has three speeds, governed by the shifter handle of the mixer. For most attachments set the handle at number 1. Set the speed at number 3 for the tool grinder, **THE CHOPPER ATTACHMENT MUST NEVER RUN FASTER THAN SPEED 1** when cutting meat, but when cutting vegetables it may run at the number 2 speed. Use the motor switch to start and stop attachments, and always stop the motor before changing the speed of an attachment.



MAINTENANCE MANUAL



MAINTENANCE MANUAL

ITEM	QTY.	DESCRIPTION	ITEM	QTY.	DESCRIPTION
1.	1	SCREWS	41.	1	BEHIED PLATE
2.	1	SCREWS	42.	1	SCREWS
3.	1	COVER-TRANSMISSION	43.	1	STAINLESS RING
4.	1	ON-OFF SWITCH	44.	1	PLANETARY HOLE
5.	1	MICROSWITCH	45.	1	PLANETARY INTERNAL GEAR(67T)
6.	1	THUMB SCREW	46.	1	BALL BEARING(6204Z)
7.	1	HUB-ATTACHMENT	47.	1	PINION-BEATER(21T)
8.	1	PLUG-ATTACHMENT HOLE	48.	1	FAN COOLING
9.	1	WASHER-THRUST	49.	1	SHAFT WRENCH
10.	1	LEVEL DRIVE GEAREAR (35T)	50.	1	CLUTCH
11.	1	KNEADER	51.	1	ARM WRENCH
12.	1	BALL BEARING (6206Z)	52.	1	PLANTINUM SWITCH
13.	1	SEAL OIL TC-62*35*10	53.	1	COVER
14.	1	PADDLE (LEAE-TYAE) (35T)	54.	1	SHAFT BLAS
15.	1	SHAFT PLANETARY	55.	1	OPERATE PLATE
16.	1	WHISK	56.	1	MOTOR <i>nw 30k, 35x23x22 cm</i>
17.	1	BOWL	57.	1	CASE TRANSMISSION
18.	1	STEADR HOOK	58.	1	CAPACITOR <i>50W 600mFD</i>
19.	1	CRADLE	59.	1	WHEEL BELT(18T)
20.	1	SCREWS	60.	1	BELT
21.	1	DOWLE SCREW	61.	1	ABOVE COVER
22.	1	NUT STOP	62.	1	BALL BEARING(6204Z)
23.	1	ESCORT PLANK	63.	1	BALL BEARING(6204Z)
24.	1	BASE	64.	1	BALL BEARING(6206Z)
25.	1	SCREWS	65.	1	BELT TRANSMISSION PULLY(85T)
26.	1	NET	66.	1	LEVEL KEY
27.	1	SCREW SHAFT	67.	1	NUT STOP
28.	1	PILLAR MIDDLE	68.	1	OIL PIUG
29.	1	BALL BEARING (6005ZZ)	69.	1	FRONT GUARD SLAB
30.	1	C-RING	70.	1	SCREWS
31.	1	OBLQUE GEAR (30T)			
32.	1	C-RING			
33.	1	SHAFT			
34.	1	OBLIQUE GEAR(30T)			
35.	1	C-RING			
36.	1	OILLESS BEARING			
37.	1	MICROSWITH			
38.	1	C-RING			
39.	1	HAND WHEEL			
40.	1	C-RING			

MAINTENANCE MANUAL

SM-402NA(5全修)

ITEM	QTY.	DESCRIPTION	ITEM	QTY.	DESCRIPTION
71.	1	C-RING	111.	1	LEVEL
72.	1	LEAD-IN OIL PAD	112.	1	LEVEL KEY
73.	1	TO GUARD AGAINST BUSK	113.	1	BALL BEARING TA 45*35
74.	2	GEAR SLOW SPEED(52T)	114.	1	SEAL OIL TC 45*35*8
75.	1	GEAR BEVEL(52T)	115.	2	OIL RWG(36X30X3)
76.	1	ROLL PILLAR	116.	2	WASHER
77.	1	SPRING SLICE	117.	2	SCREW
78.	1	GEAR CLUTCH	118.	1	SAFETY GUARD
79.	1	BUSK CLUTCH	119.	1	ELECTRIC BOX
80.	1	LEVEL KEY	120.	1	OVERLOAD RELAY
81.	1	BUSK CULTCH	121.	1	CONTACTOR
82.	1	GEAR CLUTCH(45T)	122.	1	START BUTTON
83.	1	BALL BEARING	123.	1	STOP BUTTON
84.	1	BALL BEARING(6207Z)			
85.	1	C-RING			
86.	1	GUARD OIL BUSK			
87.	1	SEAL OIL TC 72*45*12			
88.	1	NUT STOP			
89.	1	SHAFT DRIVEN			
90.	1	LEVEL KEY			
91.	1	LEVEL KEY			
92.	1	SLEEVE CLUTCH			
93.	1	ROD-SHIFTER GUIDE			
94.	1	RETAINER SPRING			
95.	1	SPRING-SHIFTER YOKE			
96.	1	PLUNGER-SHIFTER YOKE			
97.	1	YOKE-SHIFTER			
98.	1	BALL BEARING(6204)			
99.	1	C-RING			
100.	1	BALL BEARING(6204)			
101.	1	GEAR(20T)			
102.	1	SPACER BUSK			
103.	1	SHAFT MASTER(14T)			
104.	1	C-RING			
105.	1	NUT STOP			
106.	1	GEAR(30T)			
107.	1	SHAFT TRANSMISSION(13T)			
108.	1	C-RING			
109.	1	NUT STOP			
110.	1	NUT STOP			

* 修正
英文叙述

SM-402-NA

積熱電馬

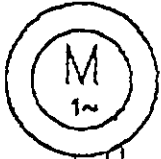
20 JAN '97

ABB 電子接觸器

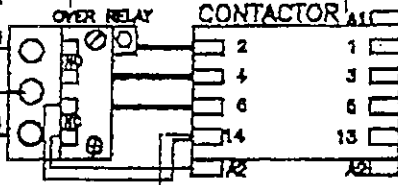
220V = 20A
200V = 8A

220V = A 9 #1

1 1/2HP MOTOR

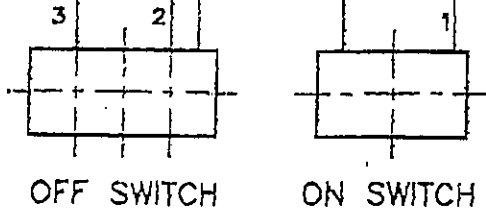
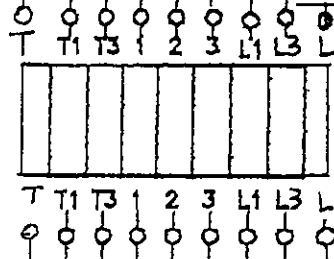


T3 T1



MICROSWITCH IN INTERLOCK

MICROSWITCH IN HOIST



POWER SUPPLY L
POWER SUPPLY L1
GROUND L2 GR

